

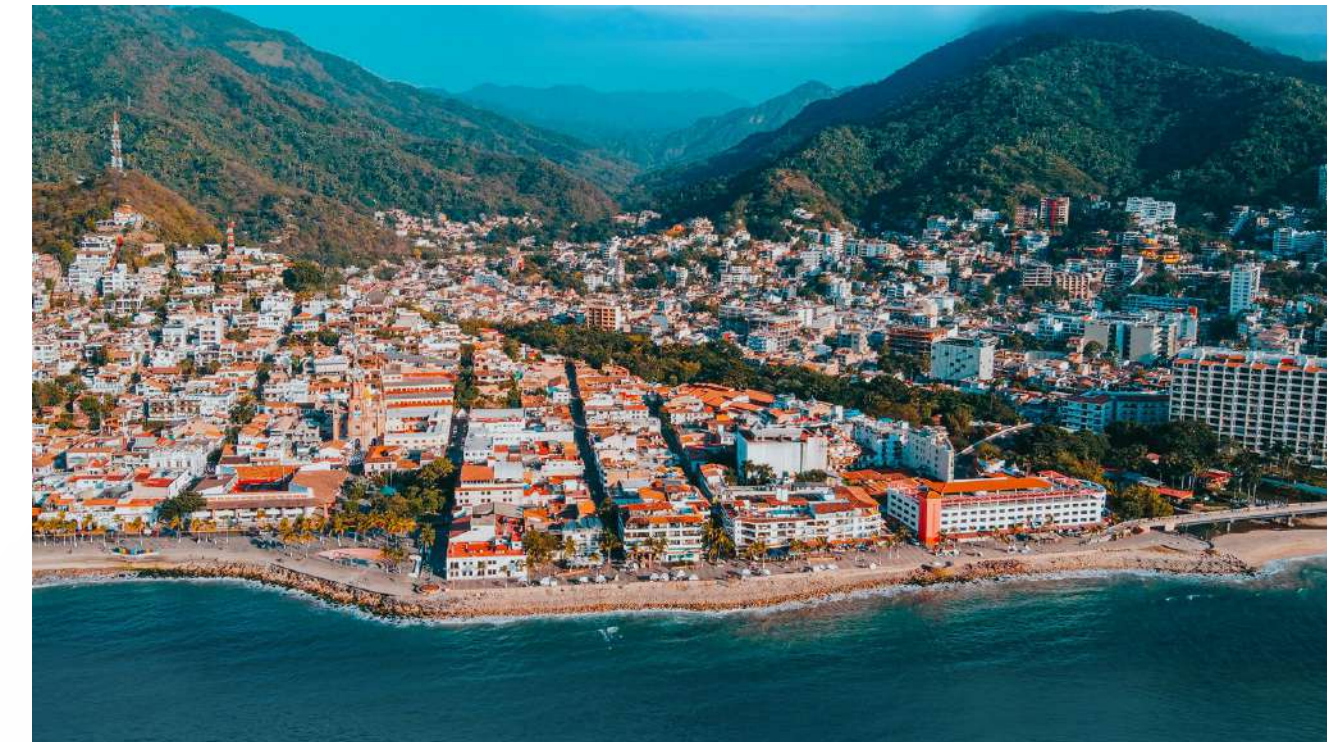
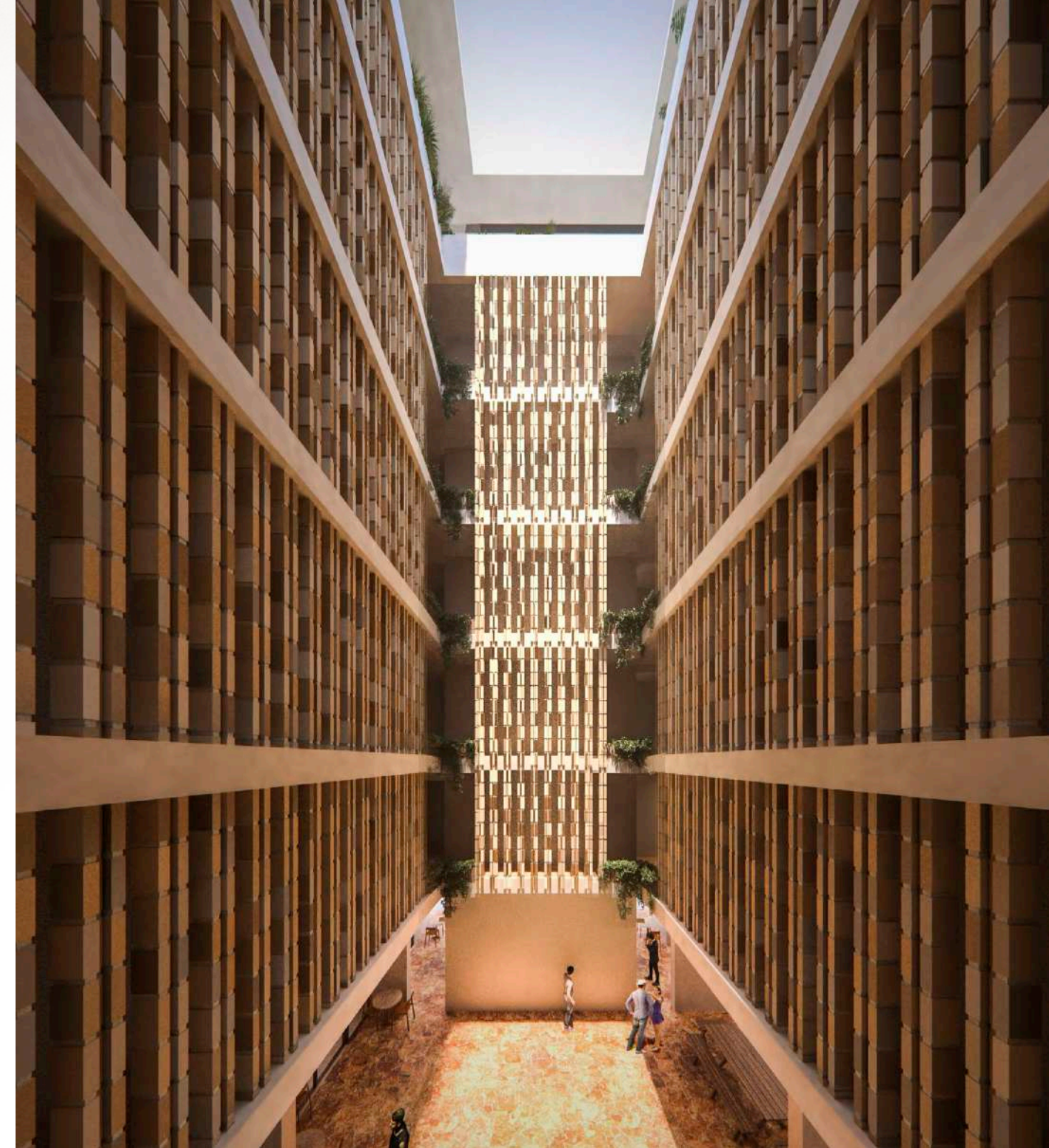


OFRENDA



*Vibrant Traditions, Natural Textures, And  
Sublime Design.*

# Welcome to the Romantic Zone's New Prestige Residence.



Located in the heart of Vallarta's Romantic Zone, Ofrenda combines the very best Vallarta living has to offer. The desirable location is moments from the Los Muertos beach, Basilio Badillo and El Centro's numerous galleries, restaurants and nightlife, and the River Cuale cultural area.

Ofrenda, offering in Spanish, pays tribute to Mexico's rich architectural heritage by employing local materials and traditional design to create a unique living experience. Architect Mauricio Rocha's design aesthetic results in a building that is at once singular and iconic, one that's been crafted with passion.

Its ambitious façade, grand open spaces and commercial area bring added life and sophistication to an already vibrant community.

# Design With Artisanal Flare



Be seduced by the romance of Mexico. Ofrenda's central location, modern-Mexican design, and Grupo Gova's solid reputation make it your perfect real estate investment opportunity.



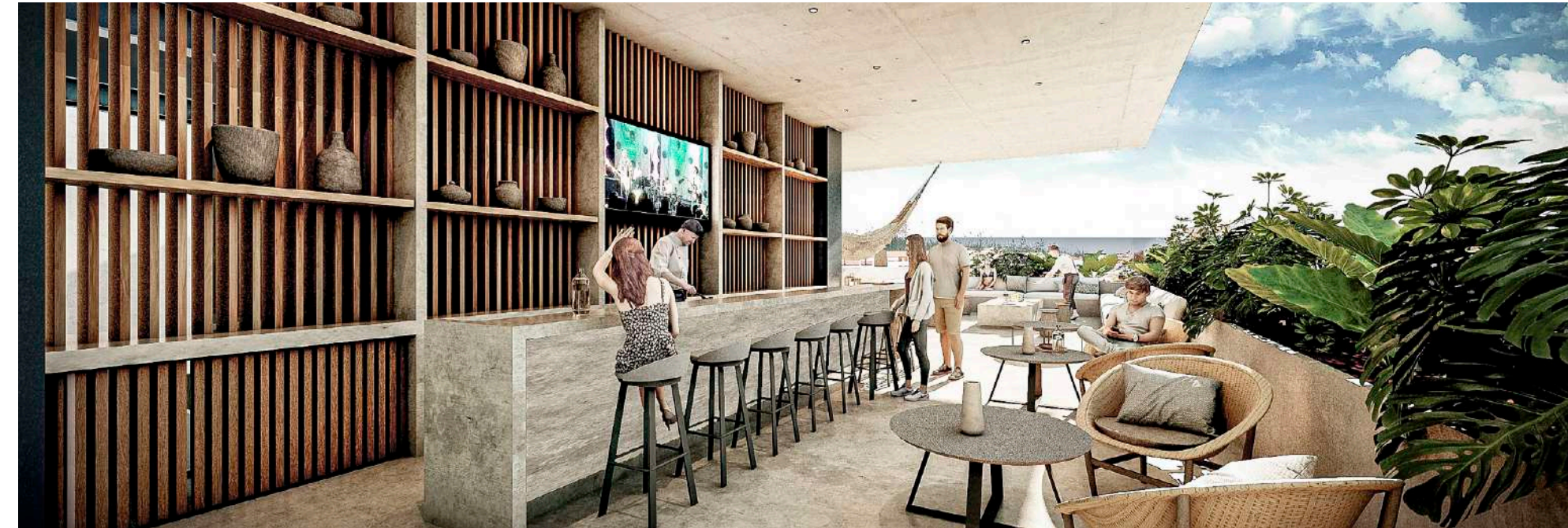
- Raw Finishes, Natural Materials, Ventilation, and Light
- 41 units comprised of
  - 5 Studios,
  - 2 Loft Units
  - 15 - One Bedroom Units
  - 11 Two Bedrooms, 2 of these with Lock-Off providing customizable flexibility based on your living and rental-income strategy and
  - 8 x Three-bedroom Units,
- Large Terraces and Corresponding Basement Storage Units
- Underground parking with car-elevator
- Access Controlled Lobby & Reception
- Fully Equipped Gym - Cardio, Strength, and Outdoor Activities

# Experience A New Take on Coastal Living

The architectural design draws its inspiration from Mexico's deep heritage, gorgeous local materials, and a construction style that surprises at every turn.

## Fully Furnished Sky Terrace

- Bay, Mountains, River, City and Cathedral Views
- Infinity Edge, Semi-Olympic Pool
- Wet Sundeck with Northwestern View.
- Four Hot Springs Styled Jacuzzis
- Sunning area with Loungers, Hammocks, and Sitting Area
- Lounge & Sports Bar and Fire Pit.
- Bathrooms, Showers, and Changing Table.
- WiFi in the Relax Area on the Terrace



# Raw Materials, Earth Tones and Natural Light.



## Unit Features

- Average interior height of 3.0 meters.
- Interior floors finished in polished concrete. (or similar)
- Exterior floors (terraces), fine washed concrete type brushed. (or similar)
- Apparent reinforced concrete ceiling. (or similar)
- Solid annealed clay partition walls. (or similar)
- Regional Chukum walls and ceramics in bathrooms and kitchen. (or similar)
- Wired units for high-speed internet, intercom, and telephone.
- Perimeter lattice based on the bioclimatic study



## Bathroom

- Forged Concrete, Terrazzo Roof (or similar)
- High-Quality Bathroom Furniture.
- Contemporary White and Water-Saving WC.
- Shower with Tempered Glass (or similar)

## Designer Kitchen

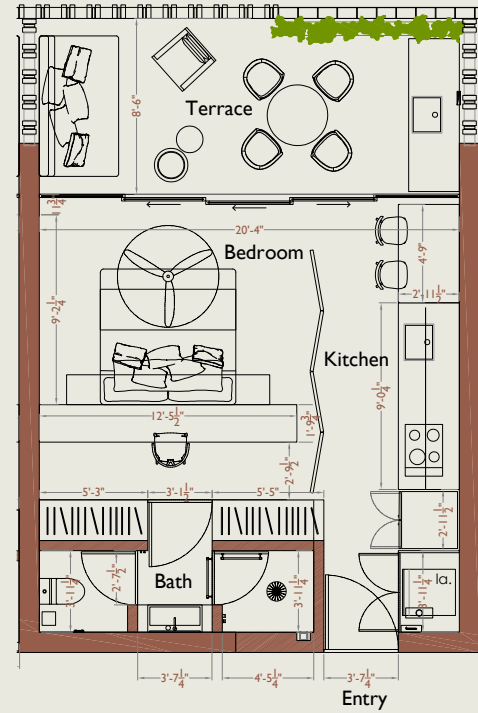
- equipped with quartz cover (or similar cover), Parota-Type Wood Cabinets.
- Stainless Steel Sink. (or similar)
- High-Quality Sink
- Stainless Steel 30", 4 Burner Stove and Hood Whirlpool/Teka (or similar)



# Studios, lofts, and one, two, & three bedroom units are available

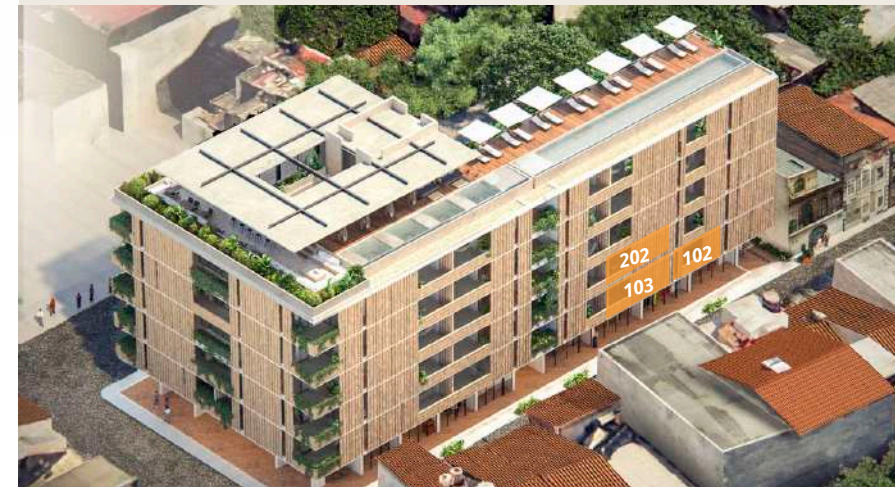
Celebrate vibrant traditions, sublime design, and natural materials.

## LUZ 1 | STUDIO

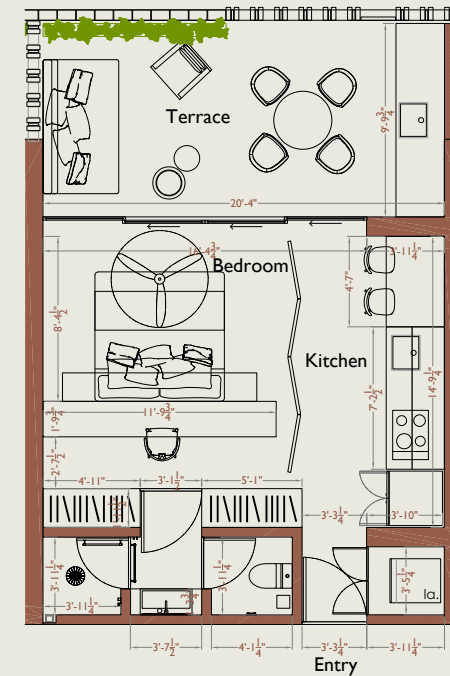


m2  
 Interior: 43.9  
 Exterior: 17.8  
**Total: 61.75**

sq feet  
 Interior: 472.5  
 Exterior: 192.1  
**Total: 664.6**



## LUZ 2 | STUDIO

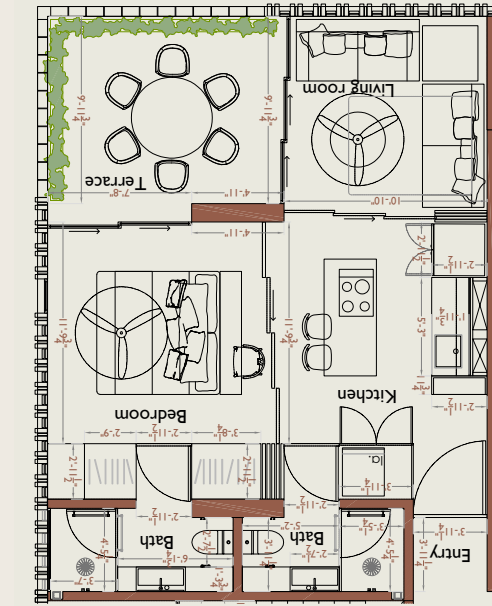


m2  
 Interior: 41.9  
 Exterior: 21.3  
**Total: 63.20**

sq feet  
 Interior: 451  
 Exterior: 229.27  
**Total: 680.27**



## ILUSIÓN | 1 BDR 2 BATH

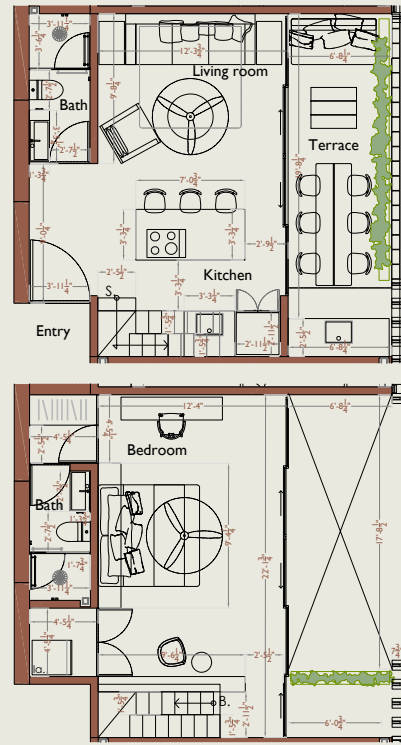


m2  
 Interior: 57.4  
 Exterior: 13.8  
**Total: 71.2**

sq feet  
 Interior: 617.84  
 Exterior: 148.54  
**Total: 766.38**



**ANHELO | 1 BED 2 BATH LOFT**



m2  
 Interior: 71.8  
 Exterior: 18.35  
**Total: 90.15**

sq feet  
 Interior: 772.84  
 Exterior: 197.51  
**Total: 970.35**



**ALEGRÍA | 1 BDR 2 BATH**

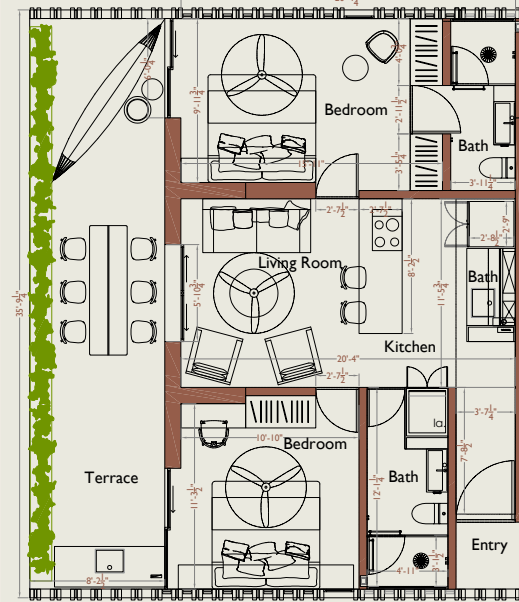


m2  
 Interior: 75.55  
 Exterior: 17.1  
**Total: 92.65**

sq feet  
 Interior: 813.21  
 Exterior: 184.06  
**Total: 997.27**



**GRACIA 1 | 2 BED 2 BATH**

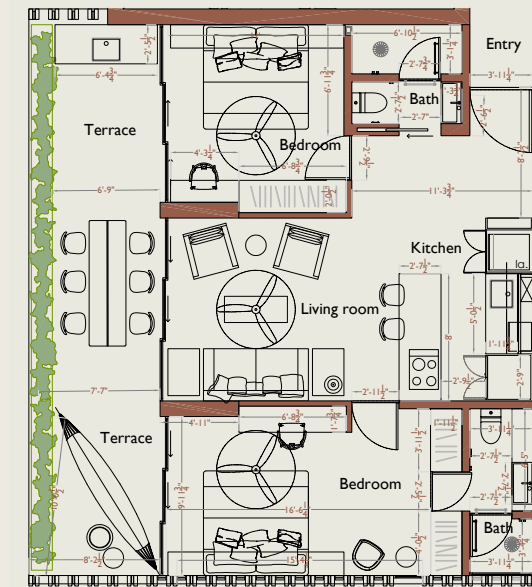


m2  
 Interior: 70.75  
 Exterior: 27.2  
**Total: 97.95**

sq feet  
 Interior: 761.54  
 Exterior: 292.77  
**Total: 1054.31**

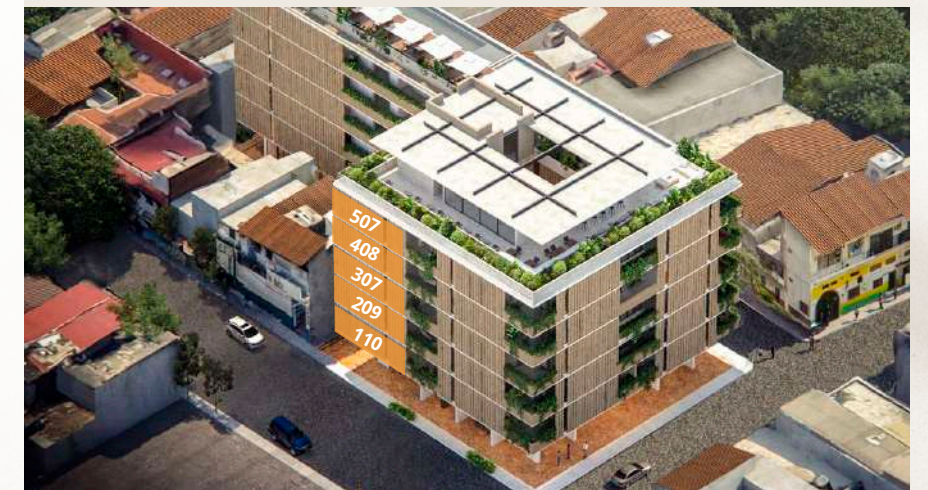


**GRACIA 2 | 2 BED 2 BATH**

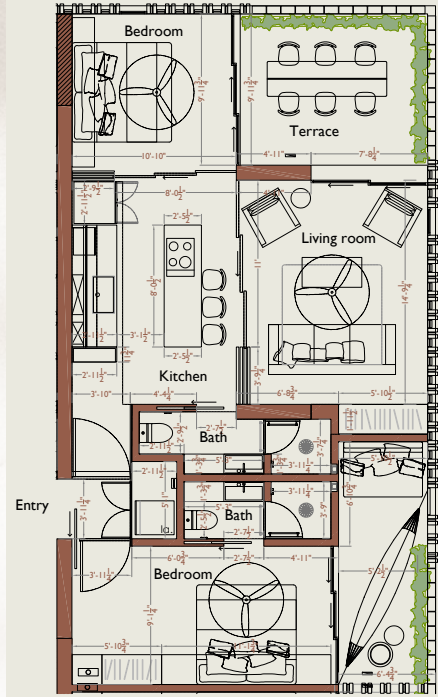


m2  
 Interior: 75.95  
 Exterior: 26.75  
**Total: 102.7**

sq feet  
 Interior: 817.51  
 Exterior: 287.93  
**Total: 1105.44**

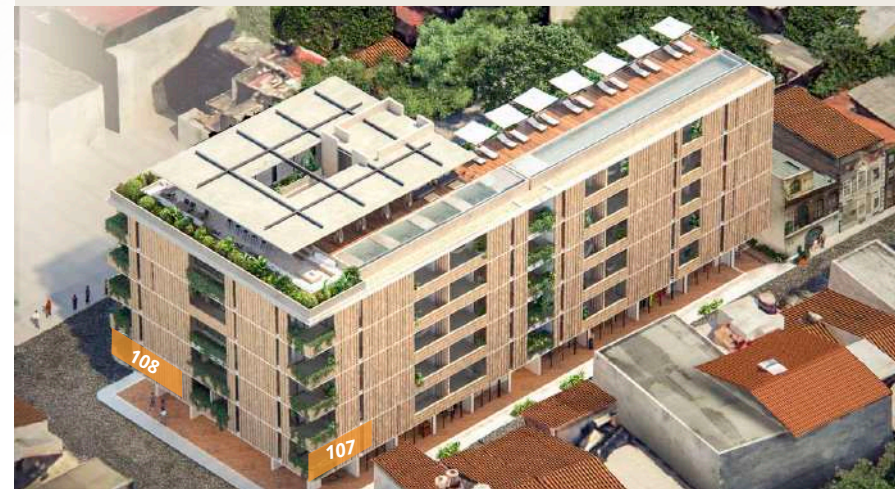


**GRACIA 3 | 2 BED 2 BATH LOCK OFF**

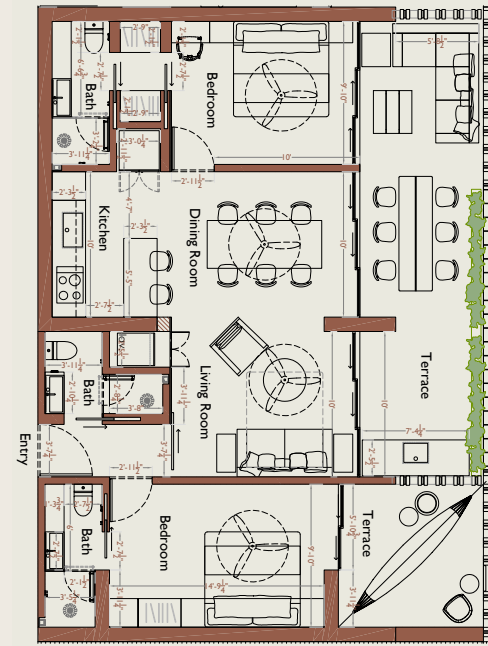


m2  
 Interior: 79.25  
 Exterior: 23.45  
**Total: 102.7**

sq feet  
 Interior: 853.03  
 Exterior: 252.41  
**Total: 1105.44**



**GOZO | 2 BED 2 1/2 BATH**

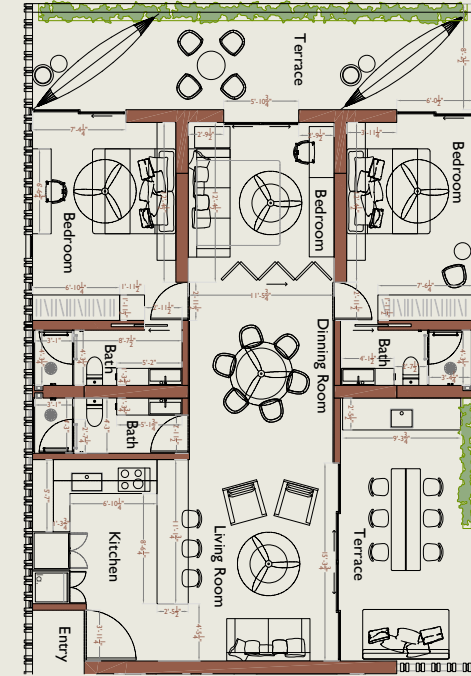


m2  
 Interior: 87.6  
 Exterior: 37.35  
**Total: 124.95**

sq feet  
 Interior: 942.91  
 Exterior: 402.03  
**Total: 1344.94**



**DEVOCIÓN 1 | 3 BED 3 BATH**

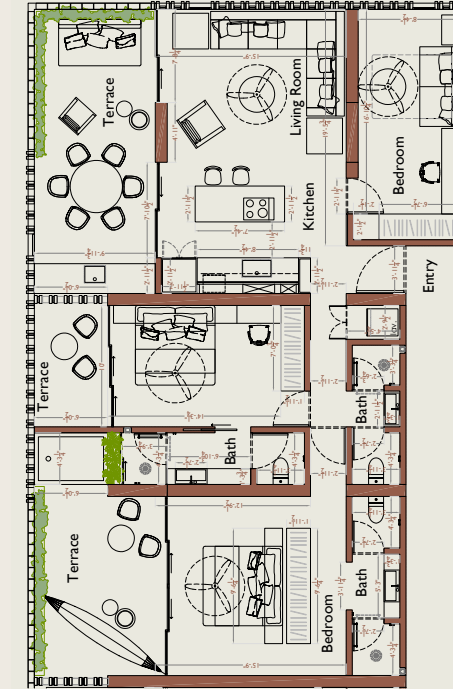


m2  
 Interior: 120.2  
 Exterior: 48.55  
**Total: 168.75**

sq feet  
 Interior: 1293.82  
 Exterior: 522.58  
**Total: 1816.4**



**DEVOCIÓN 2 | 3 BED 3 BATH**



m2  
 Interior: 120.65  
 Exterior: 50  
**Total: 170.65**

sq feet  
 Interior: 1298.66  
 Exterior: 538.19  
**Total: 1836.85**





LUZ 1



GRACIA 3



ANHELO



GRACIA 1



GOZO



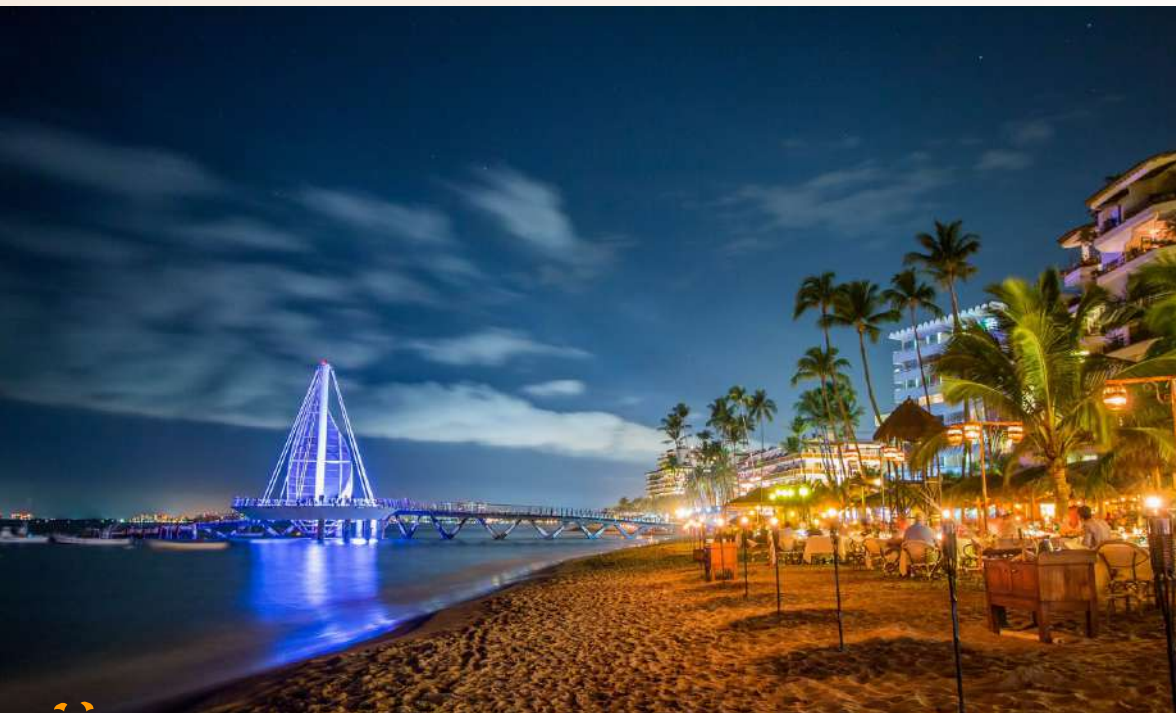
ALEGRÍA



DEVOCIÓN 1



## An Intimate, Cosmopolitan Beachside Enclave



Ofrenda is in the thriving Romantic Zone, boasting a dazzling restaurant, nightlife, and art scene. The area's historic colonial architecture lives comfortably with new low-rise developments. It is buffeted by mountains, river, and ocean to make it one of the most culturally diverse neighborhoods in the city.



*Immerse yourself in comfort and culture in Puerto Vallarta's iconic new community.*

**Don't miss this incredible investment opportunity.  
Contact us today.**



**ofrenda@mexlife.com**

*The developer reserves the right to change colors, materials, services, plans, and terms at any time without notice.*

